

84 Northfield Avenue, London, W13 9RR

020 8840 5151



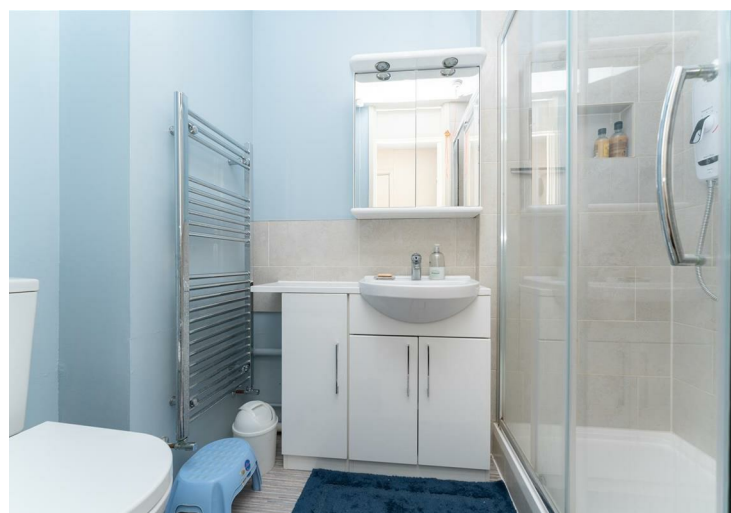
**Leasehold / Apartment**

**133 Northcroft Road**  
**£205,000**

A bright and airy one bedroom retirement apartment for the over 55's in this central Northfields location.

- Retirement apartment for over 55's
- Close to local shops and transport links
- Lift service
- Residents parking
- Communal gardens
- Laundry room





**Leasehold / Apartment**

# 133 Northcroft Road, W13 9TA

## £205,000

Mayo Court is a sought after retirement development found in central Northfields. Located on the top floor of this building, this well presented one bedroom flat offers good size lounge, fitted kitchen, smart shower room and double bedroom with built in wardrobes.

Northcroft Road is a short walk to the local shops, café bars and restaurants on Northfield Avenue along with the Piccadilly Line tube station and excellent bus services. Walpole, Lammas and Blondin Parks are also close by.



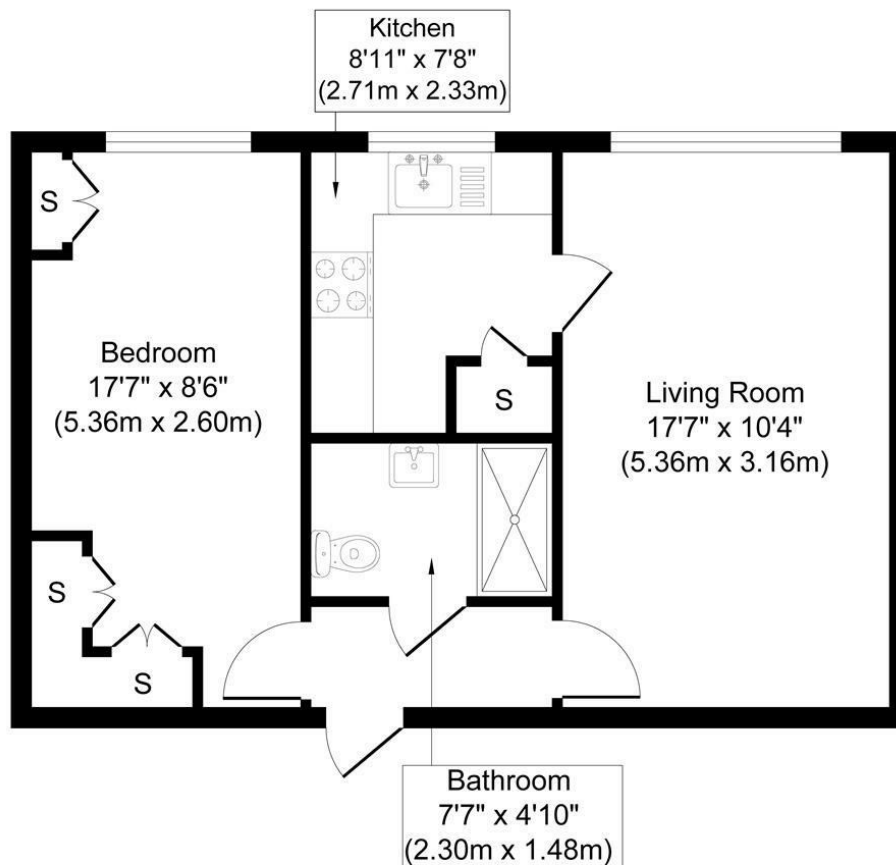


84 Northfield Avenue, London, W13 9RR

020 8840 5151



**Flat 8, Mayo Court, 133, Northcroft Road, London W13 9TA**



**Approximate Gross Internal Floor Area 478.28 sq. ft / 44.43 sq. m**

Illustration for identification purposes only, measurements are approximate, not to scale.  
produced by jcphotographystudio.com

**Energy Performance Graph**

Energy Efficiency Rating		
	Current	Potential
Very energy efficient - lower running costs		
(92 plus) <b>A</b>		
(81-91) <b>B</b>		
(69-80) <b>C</b>	78	78
(55-68) <b>D</b>		
(39-54) <b>E</b>		
(21-38) <b>F</b>		
(1-20) <b>G</b>		
Not energy efficient - higher running costs		
England & Wales		
EU Directive 2002/91/EC		

**Call us on**

**020 8840 5151**

**northfieldsales@sintonandrews.co.uk**  
**www.sintonandrews.co.uk**

Agents Note: Whilst every care has been taken to prepare these particulars, they are for guidance purposes only. All measurements are approximate and are for general guidance purposes only and whilst every care has been taken to ensure their accuracy, they should not be relied upon and potential buyers are advised to recheck the measurements.